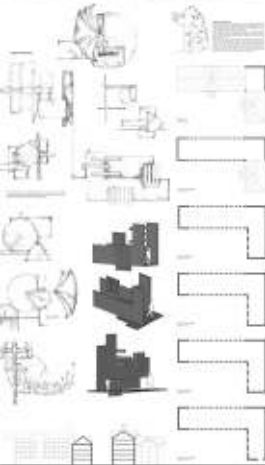
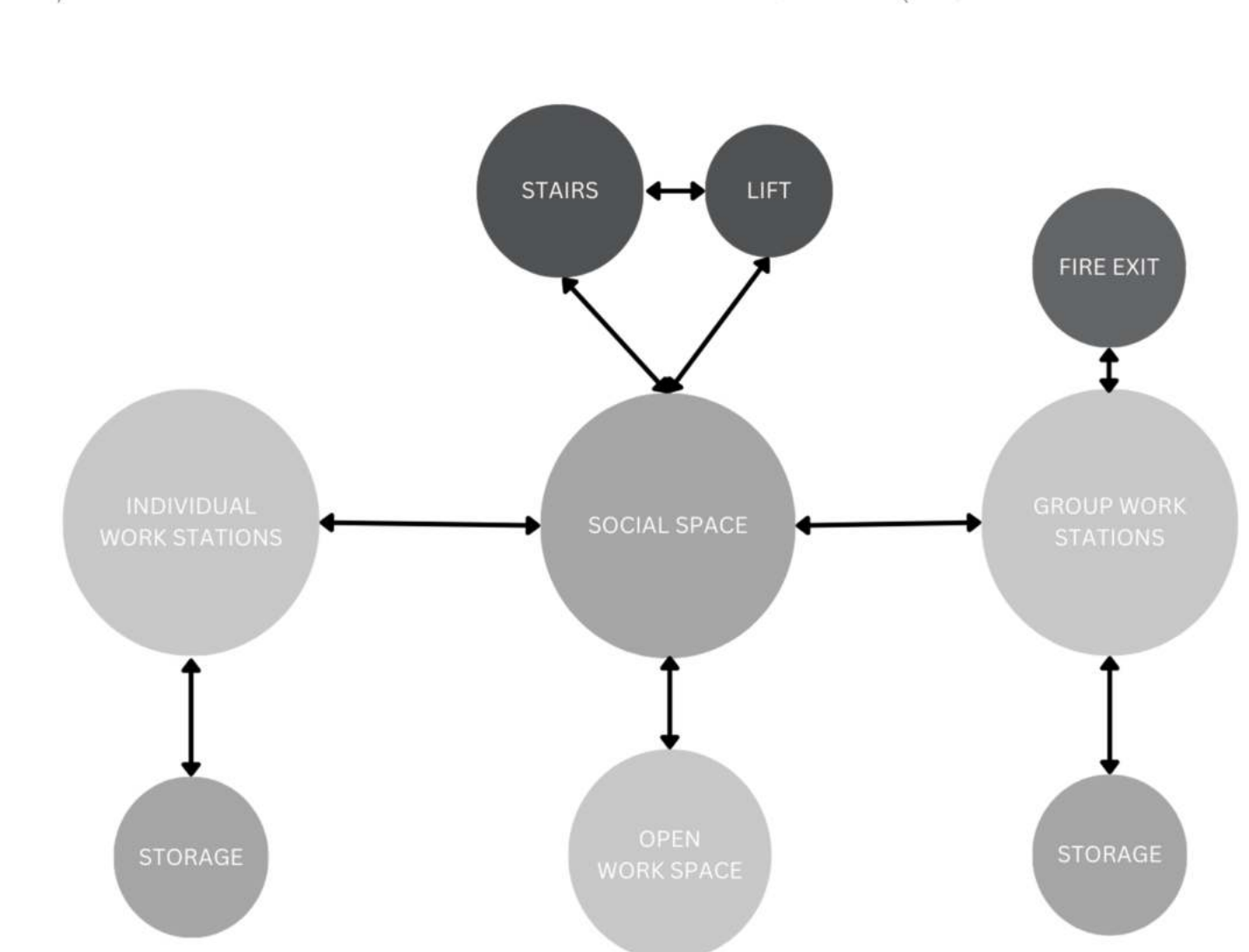
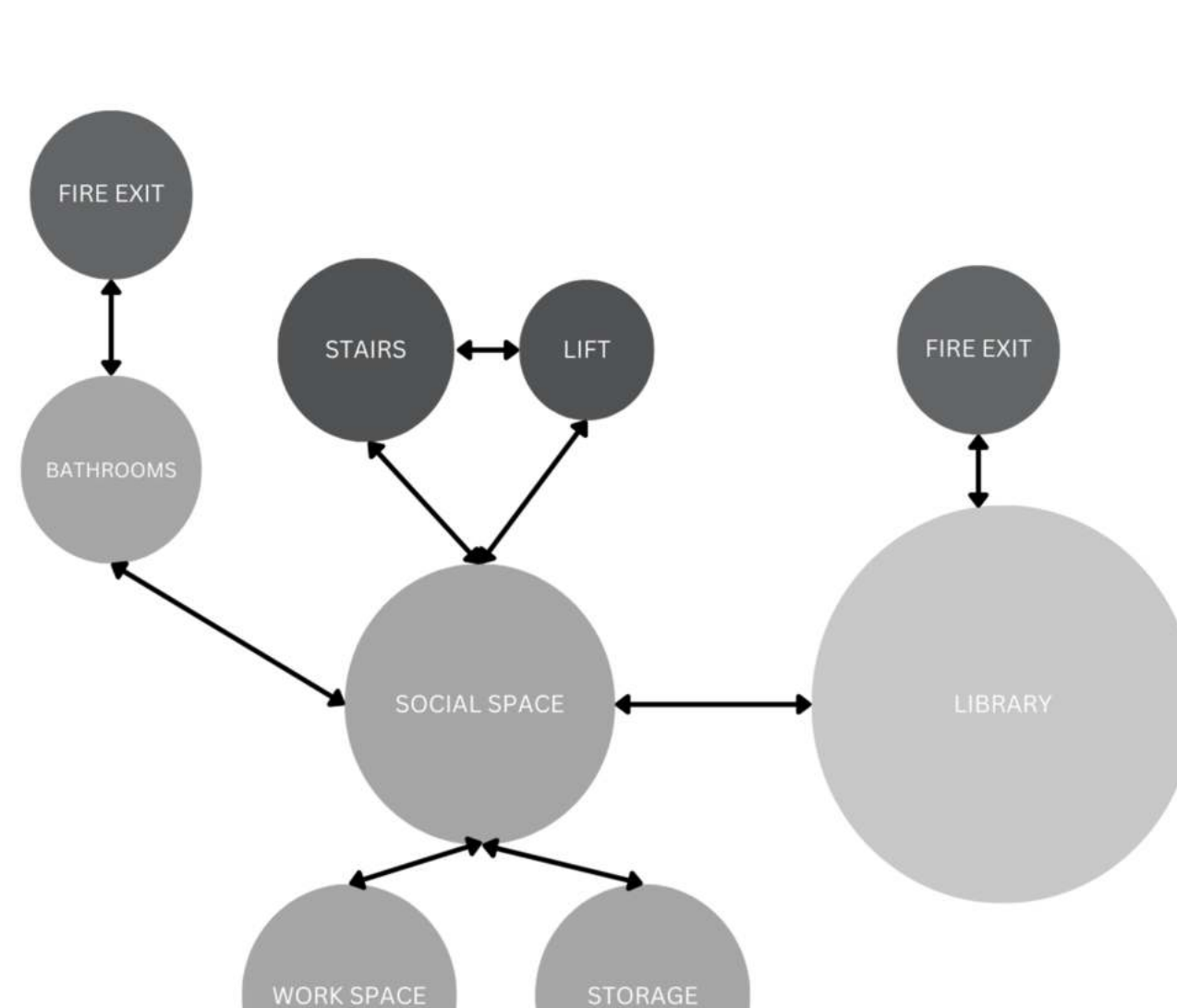
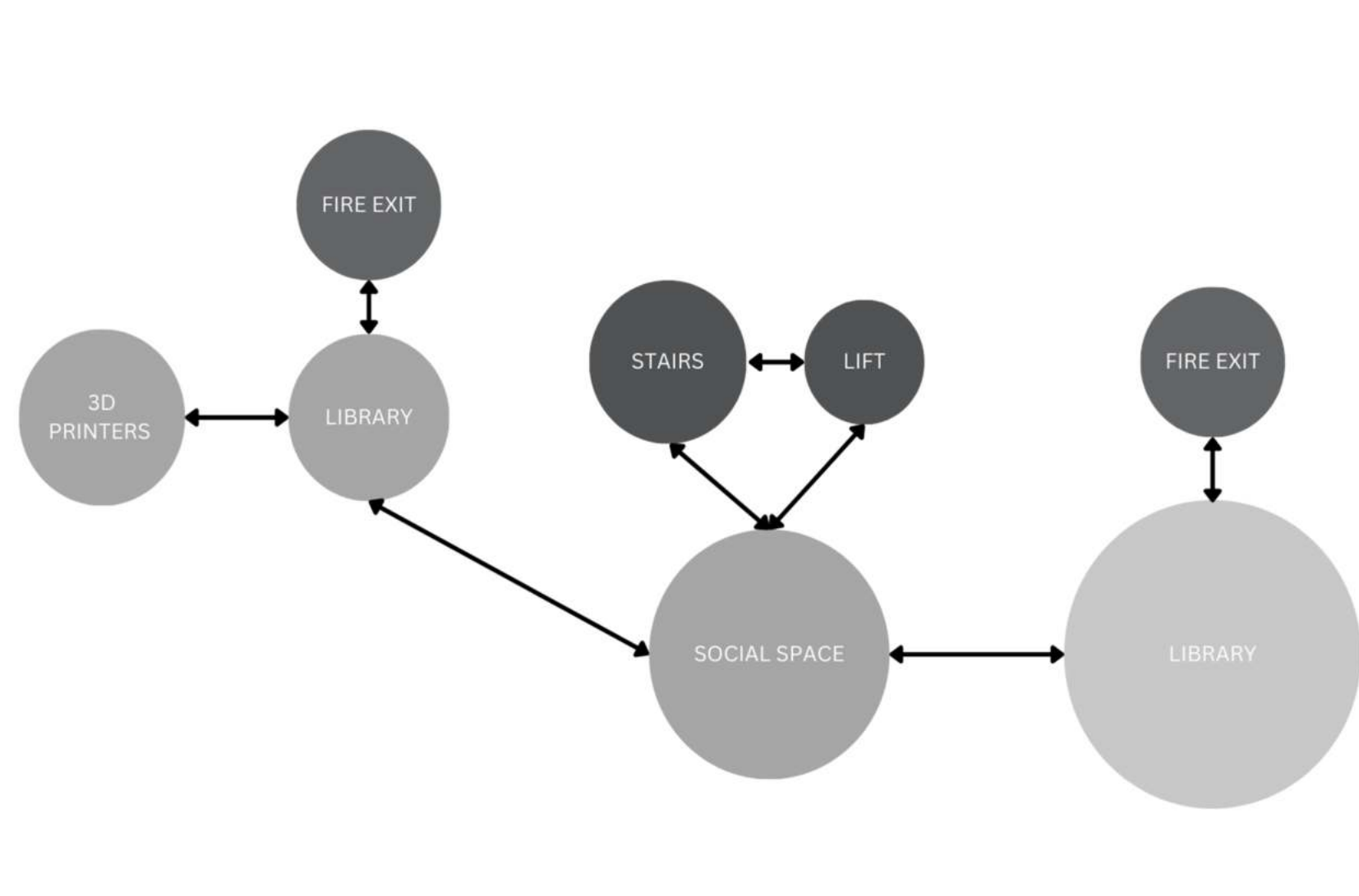
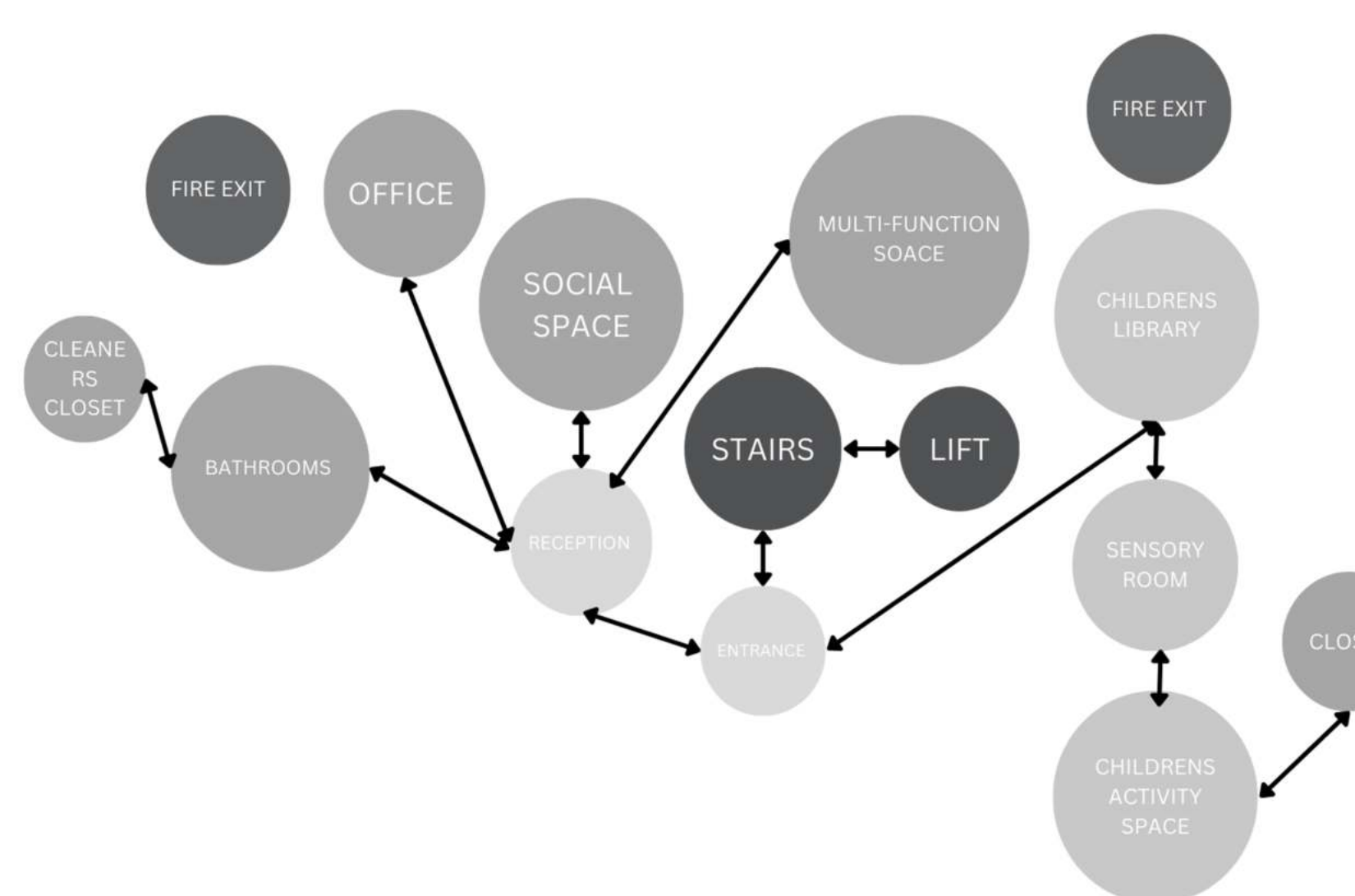
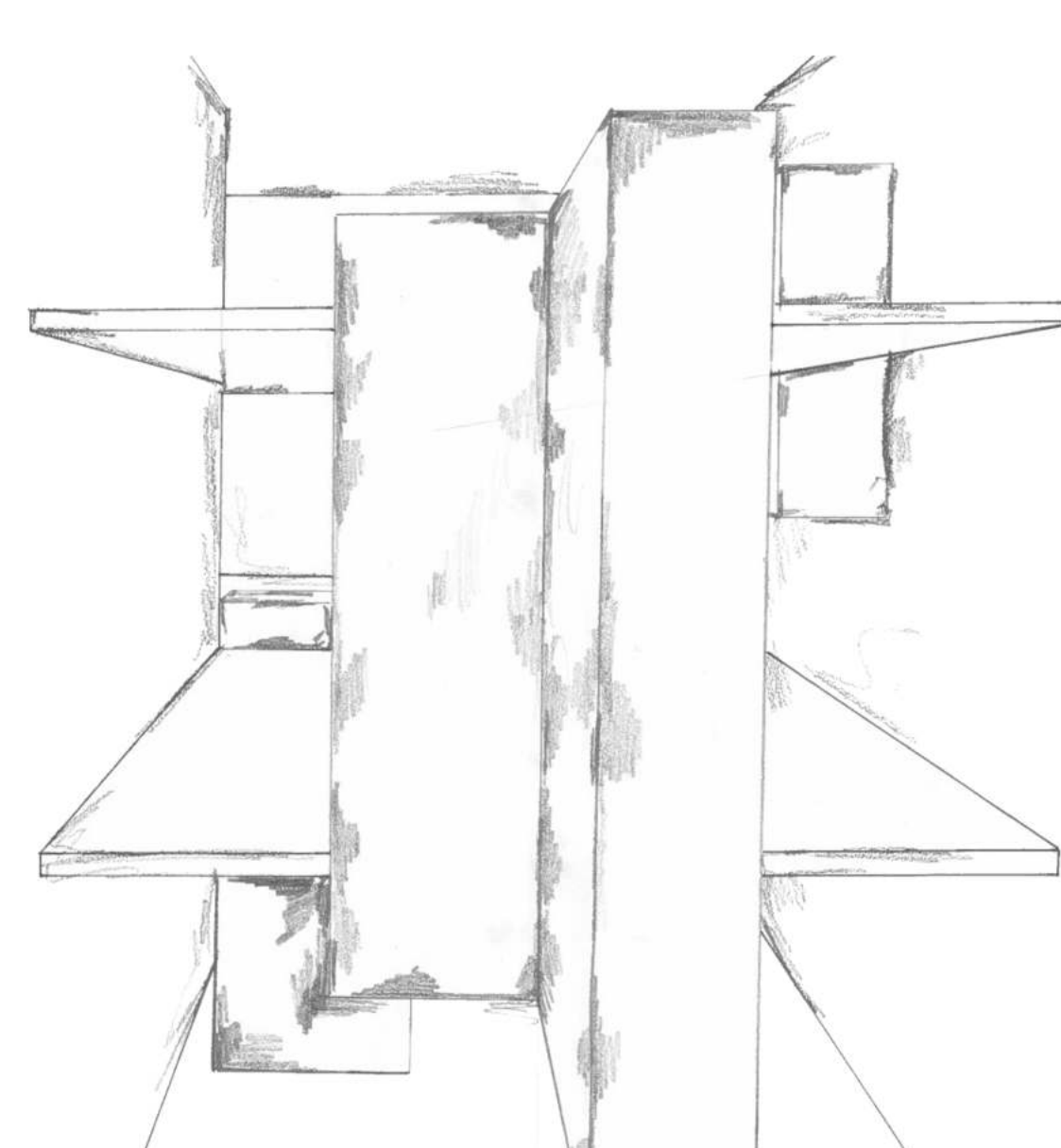
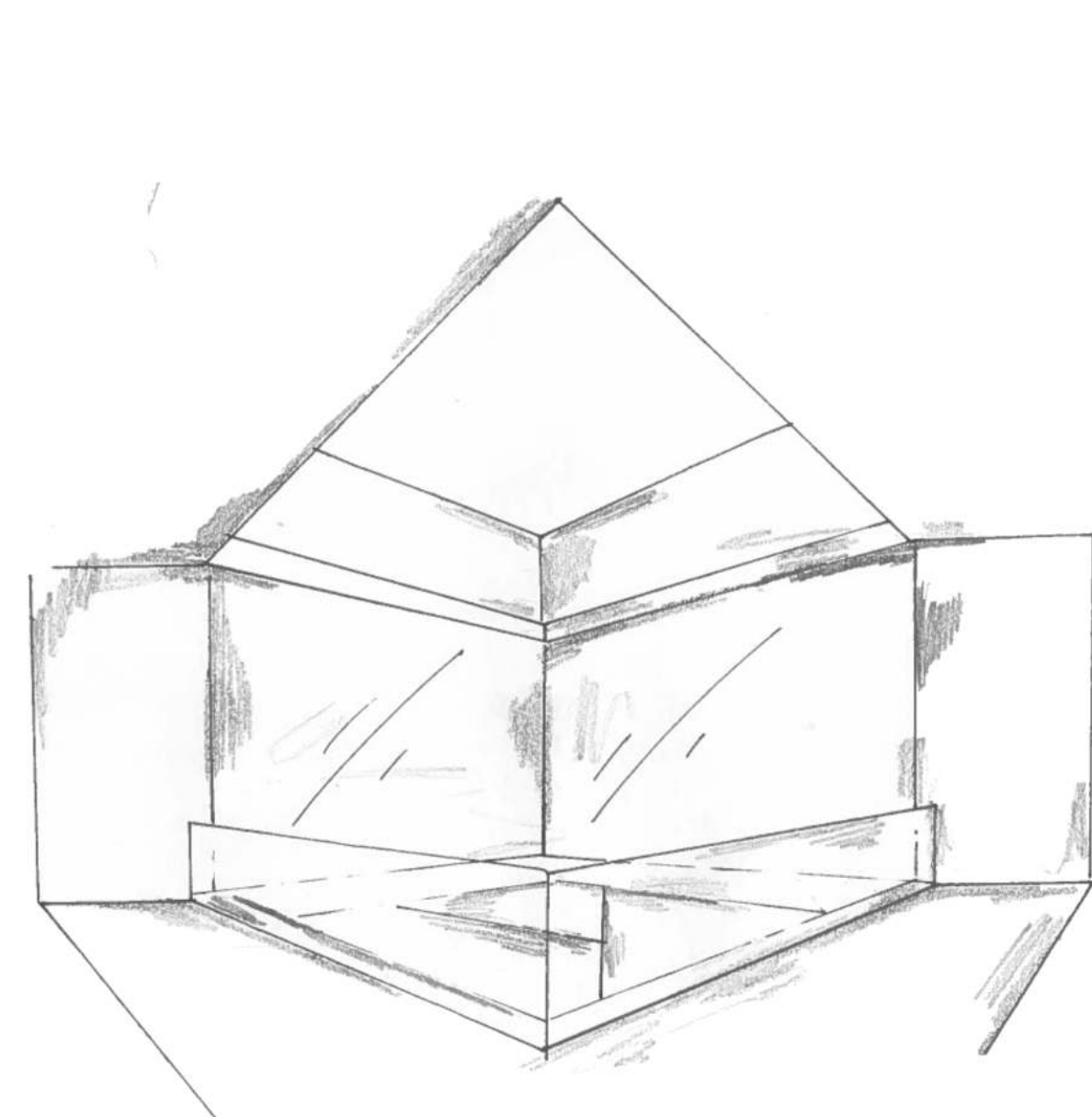
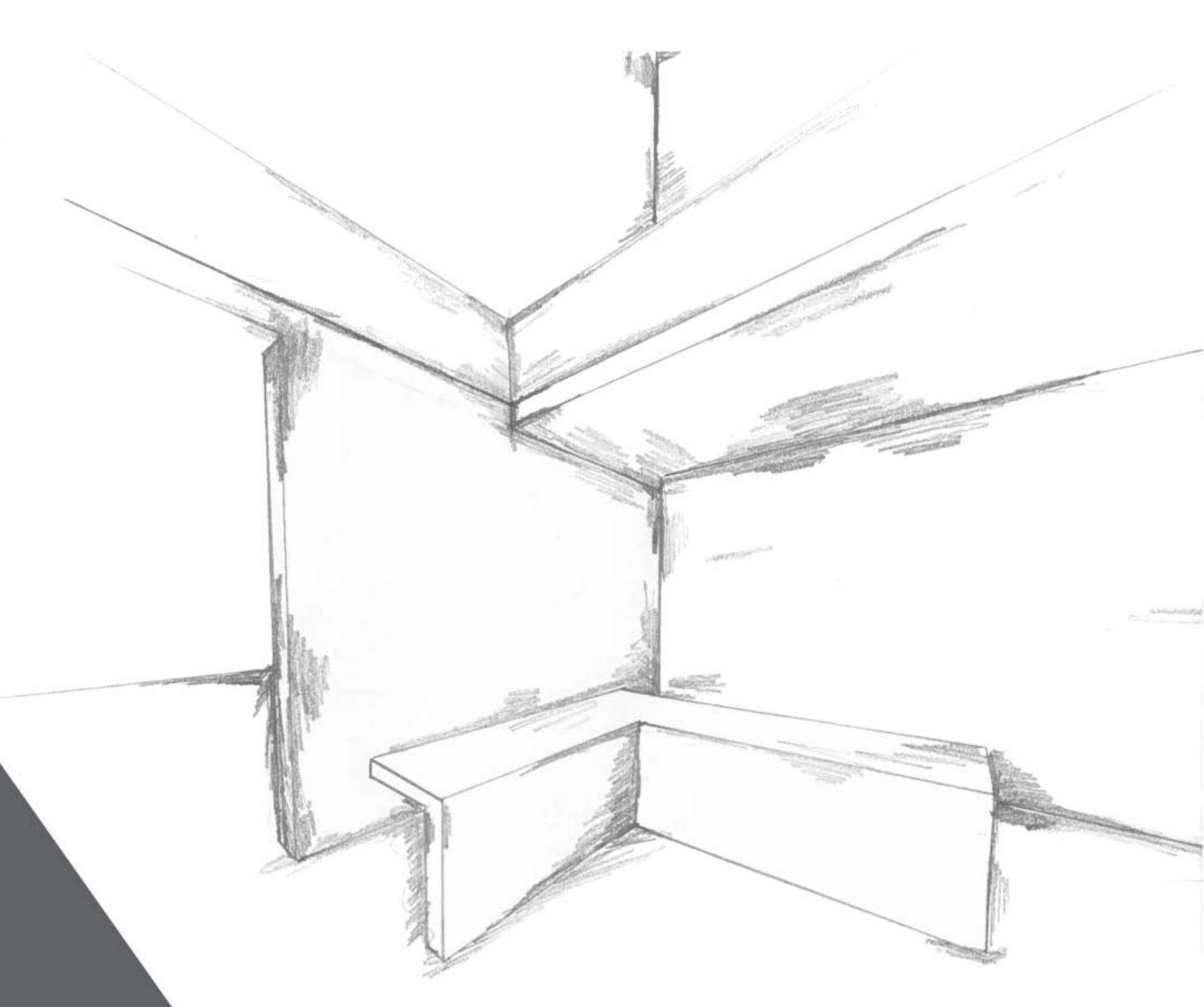




The Great Wall

Several paragraphs of text, likely describing the Great Wall of China, its history, and its significance. The text is arranged in a grid-like format with multiple columns.



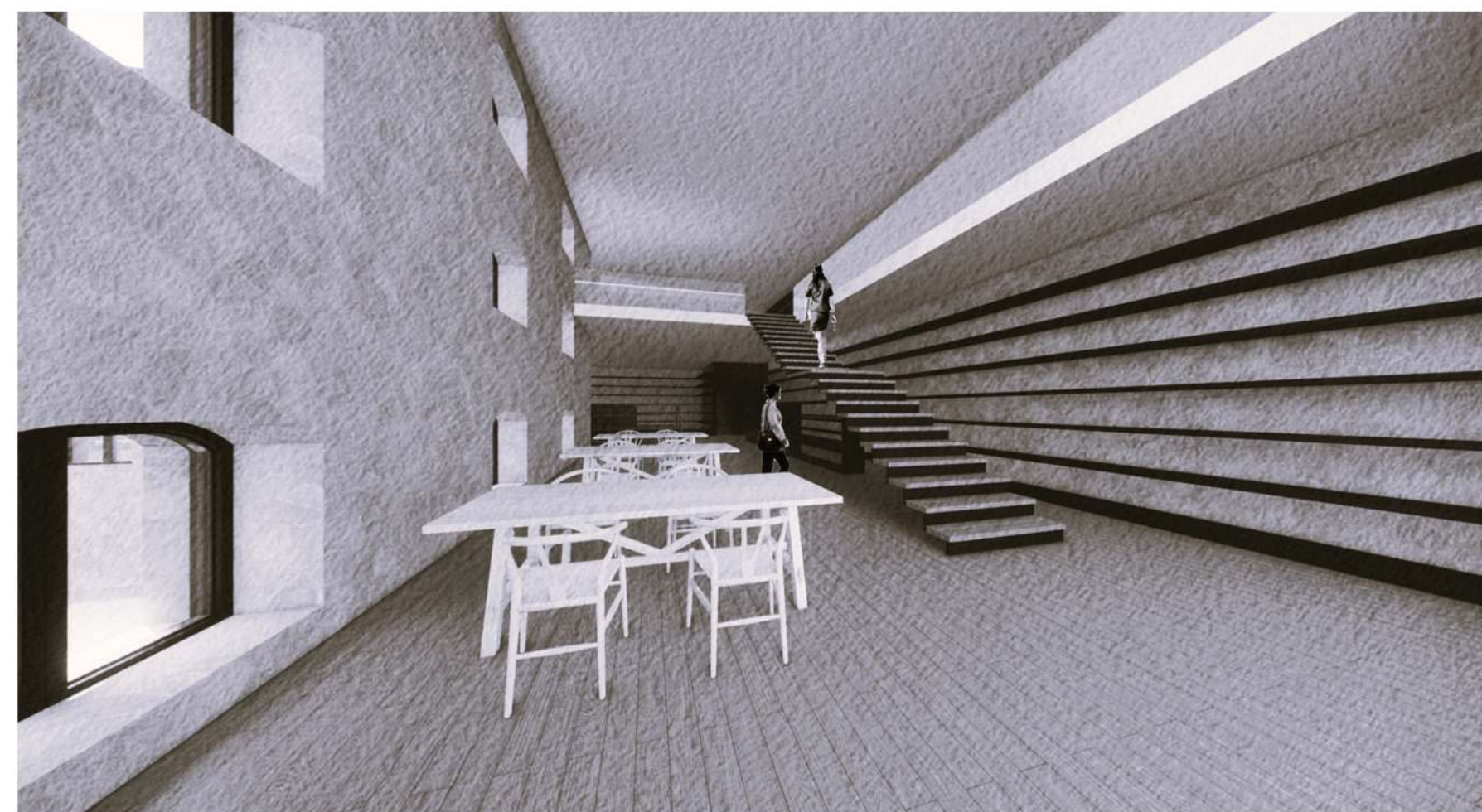


GROUND FLOOR ENTITY RELATIONSHIP DIAGRAM

FIRST FLOOR ENTITY RELATIONSHIP DIAGRAM

SECOND FLOOR ENTITY RELATIONSHIP DIAGRAM

THIRD FLOOR ENTITY RELATIONSHIP DIAGRAM

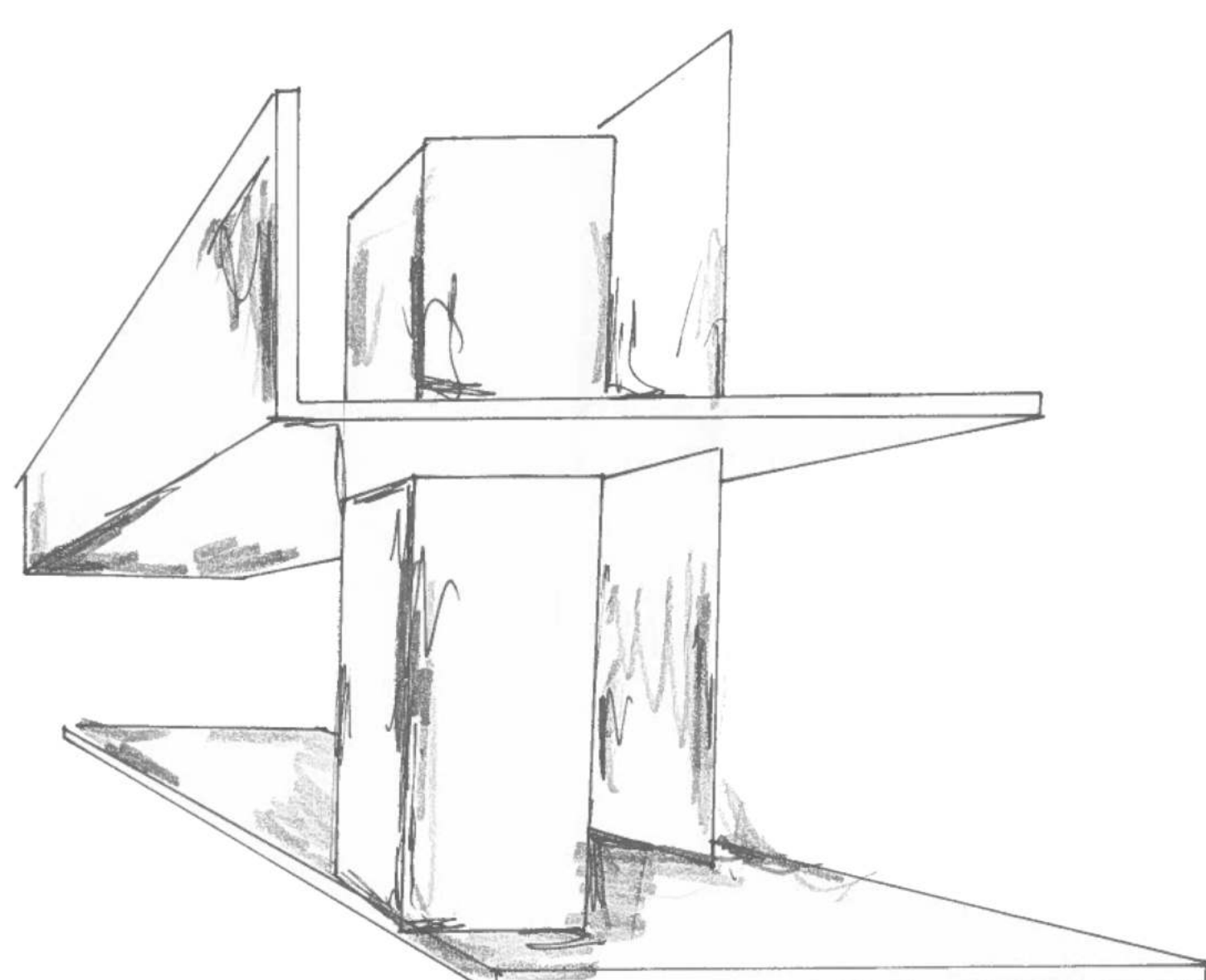
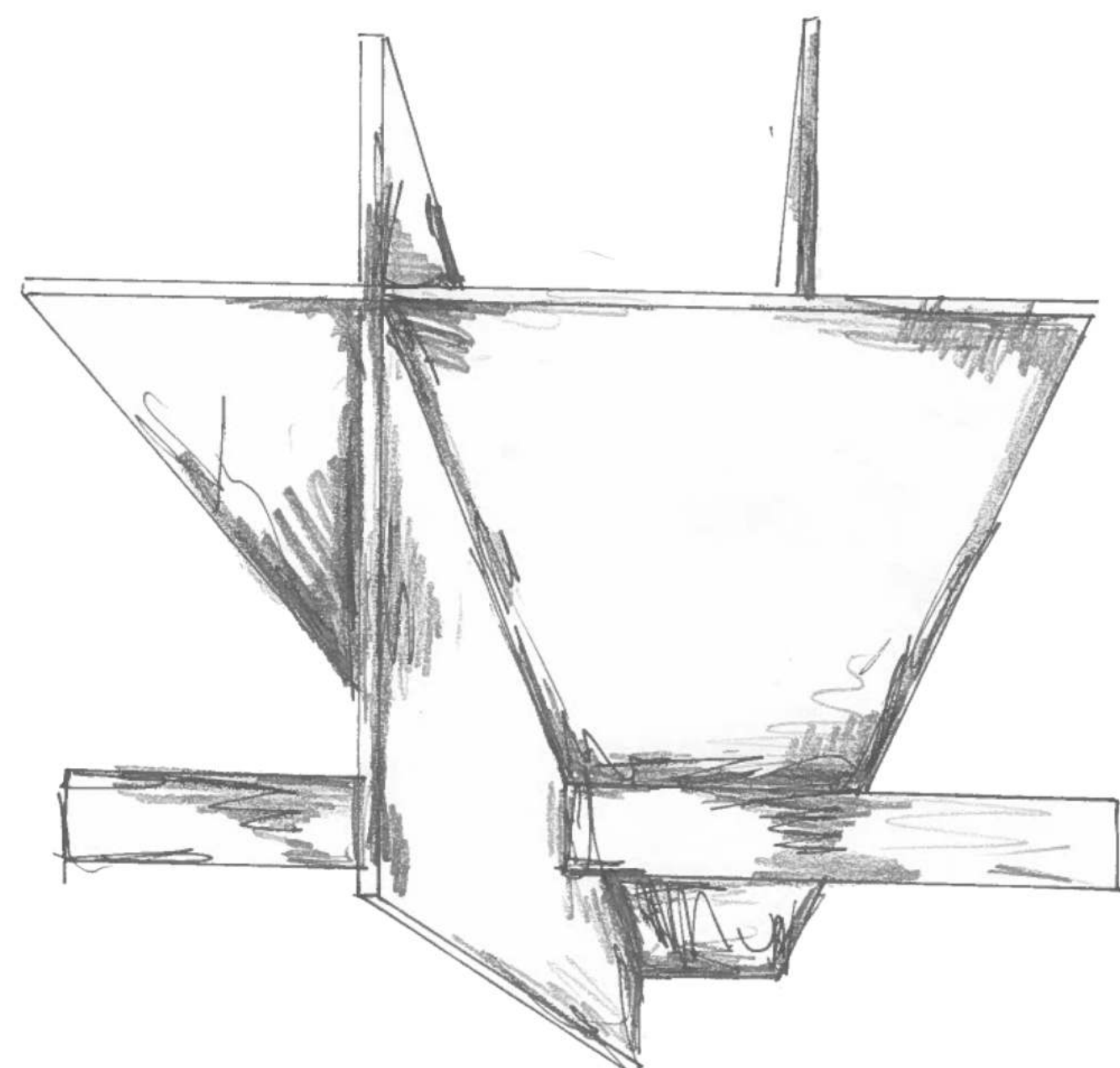
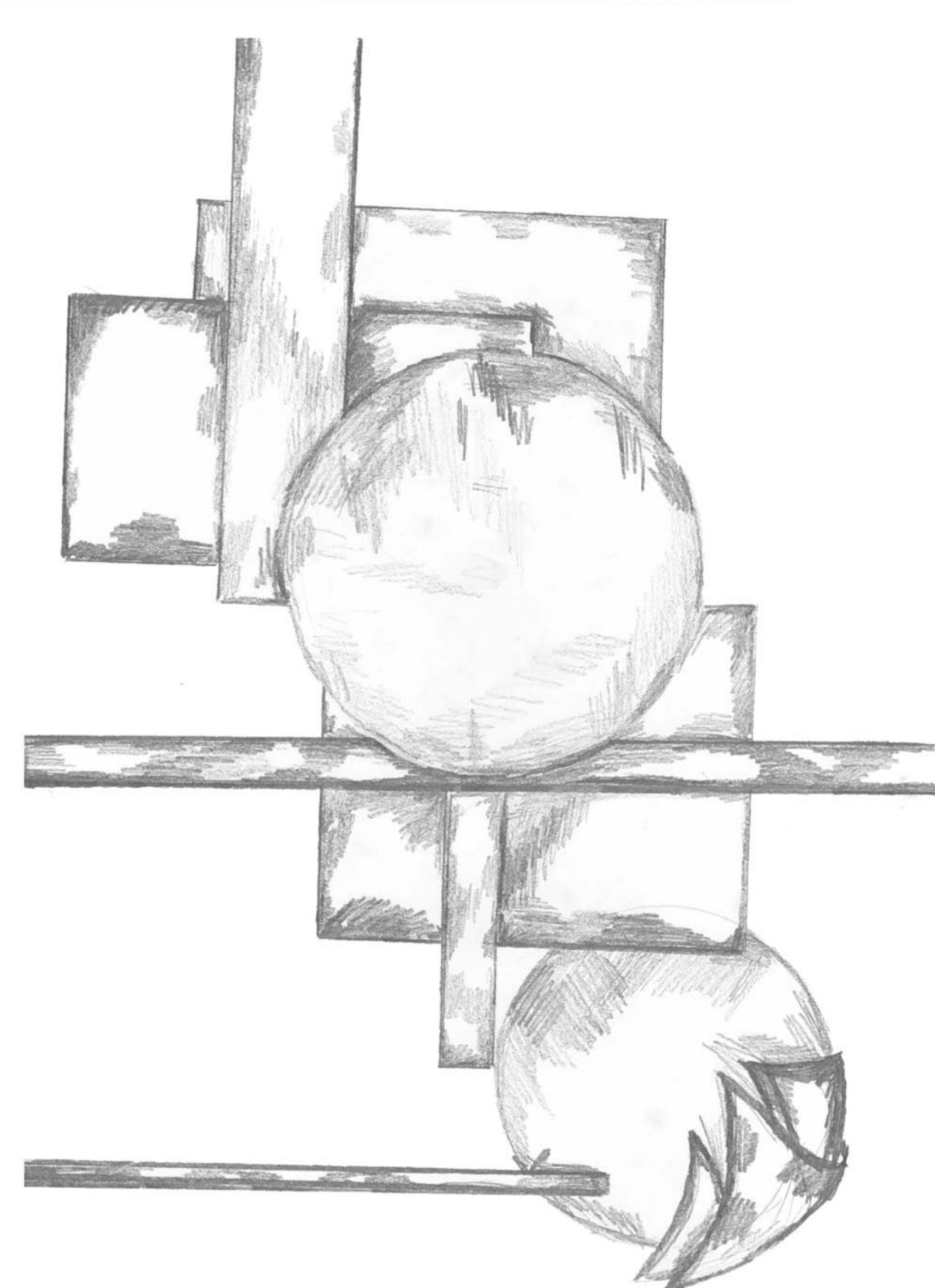
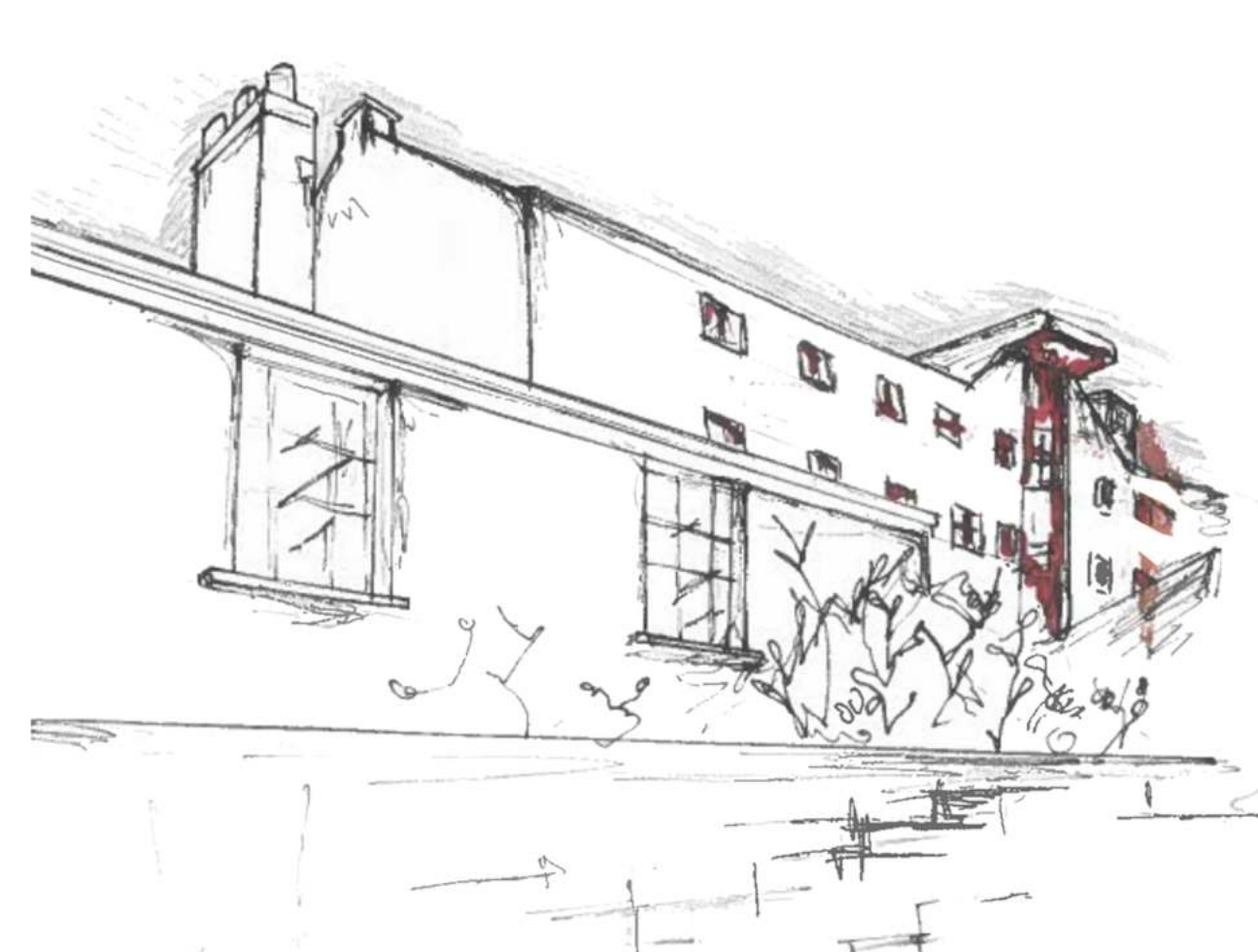


Jessica O'Rourke IA4 The Grain Store Cuddigan's Yard, Midleton

The design intervention developed from analysing the make up of machinery used in 18th Century Ireland, as well as the etchings of James Mahoney. The concept manifested into sharp shapes, which have been introduced to the building to create dynamic spaces.

The primary function of the building is a library, the library areas or reading rooms are split up into three types: a children's reading room with an activity space and sensory room, this is located in the 'east wing' of the building on the ground floor. The second reading room is located on the first floor, this space is dedicated to teenagers and young adults - here they will have access to lounge area, their own reading room and 3D printers. The primary library area can be accessed through the first and second floors, similarly to the childrens reading rooms it is also located in the 'east wing'. The space features a double height space, tables for reading, as well as a large window that overlooks the seating areas.

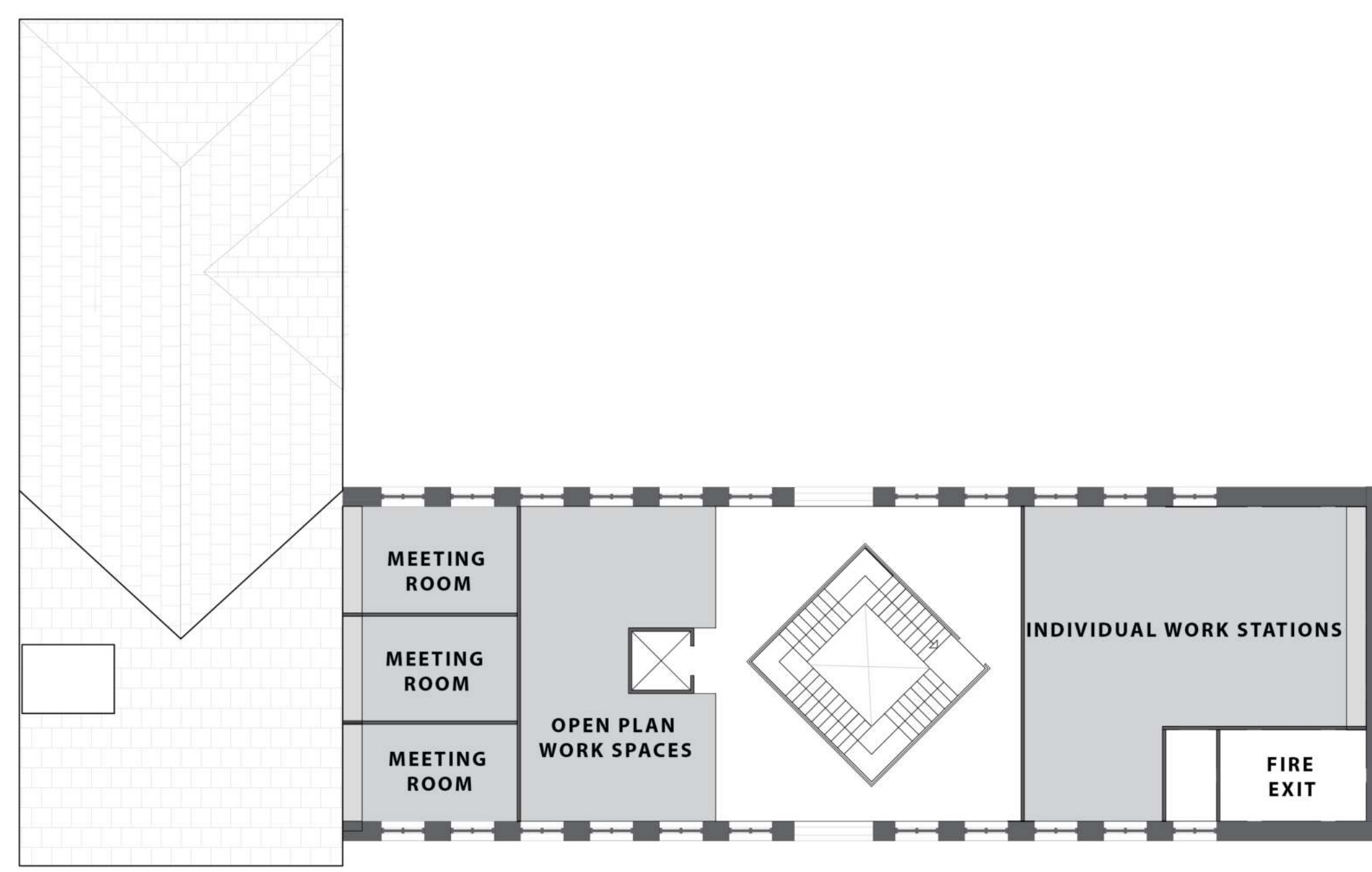
Other functions provided in the new library include, a variety of individual and group workspaces on the third floor. A multi-purpose area on the ground floor, and social areas throughout the floor the promote interaction between individuals.



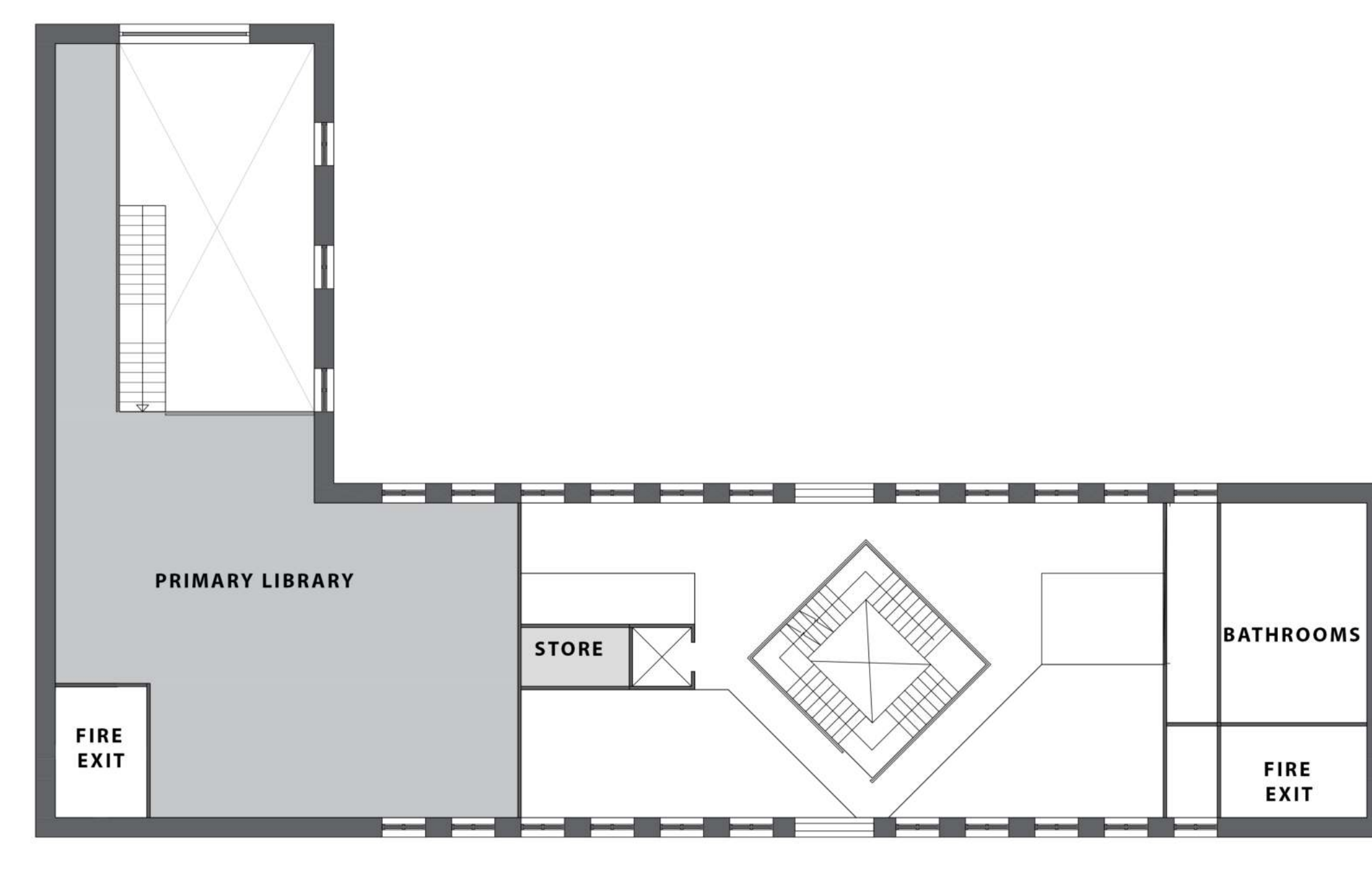
The internal forms of the building were further developed using the shapes that create the concept model. By extruding these shapes the location of stairs and lift shaft were chosen, and were given a central location, as circulation is vital to creating interaction between members of the community.



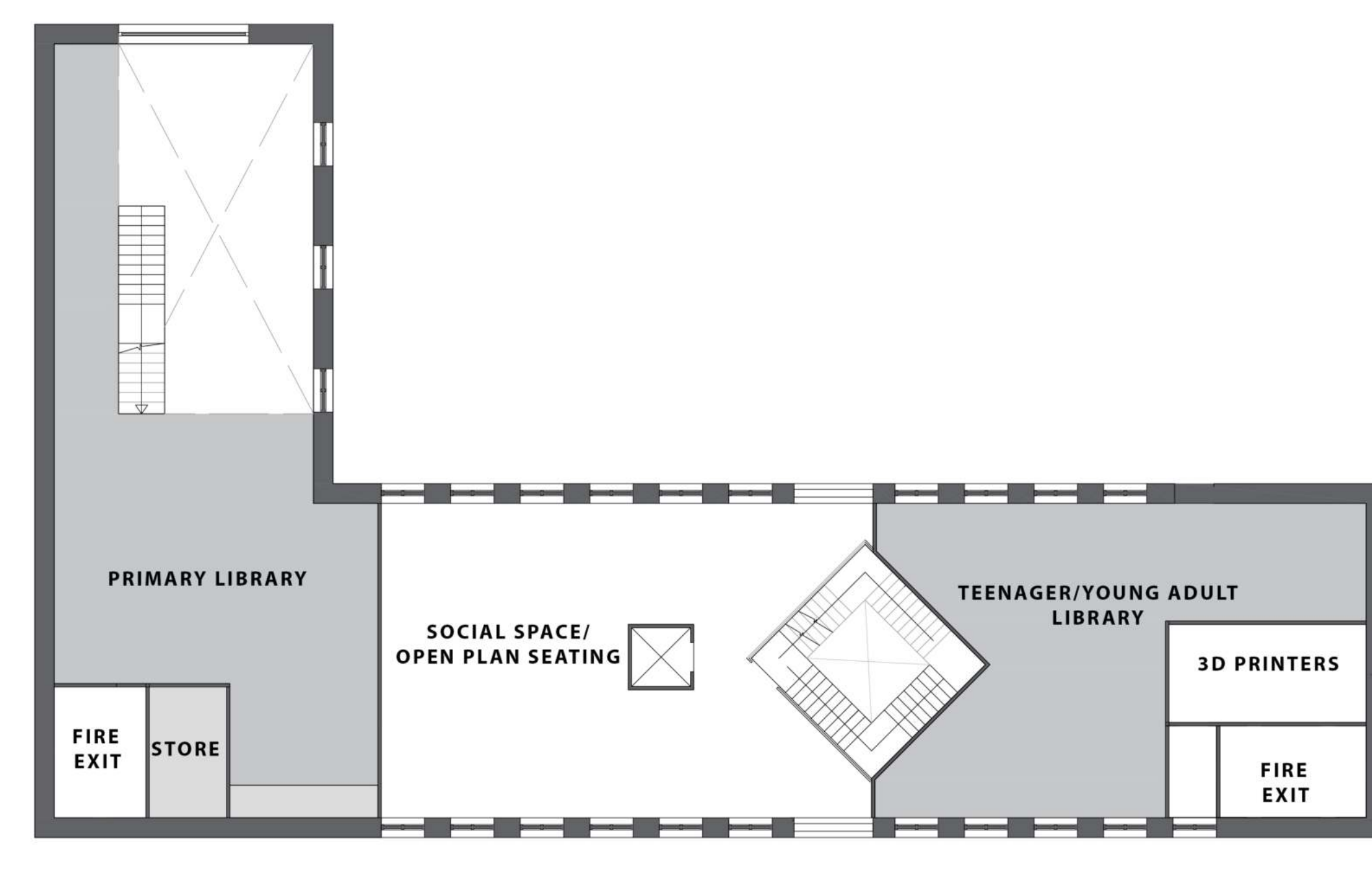
ROOF PLAN SCALE 1:150



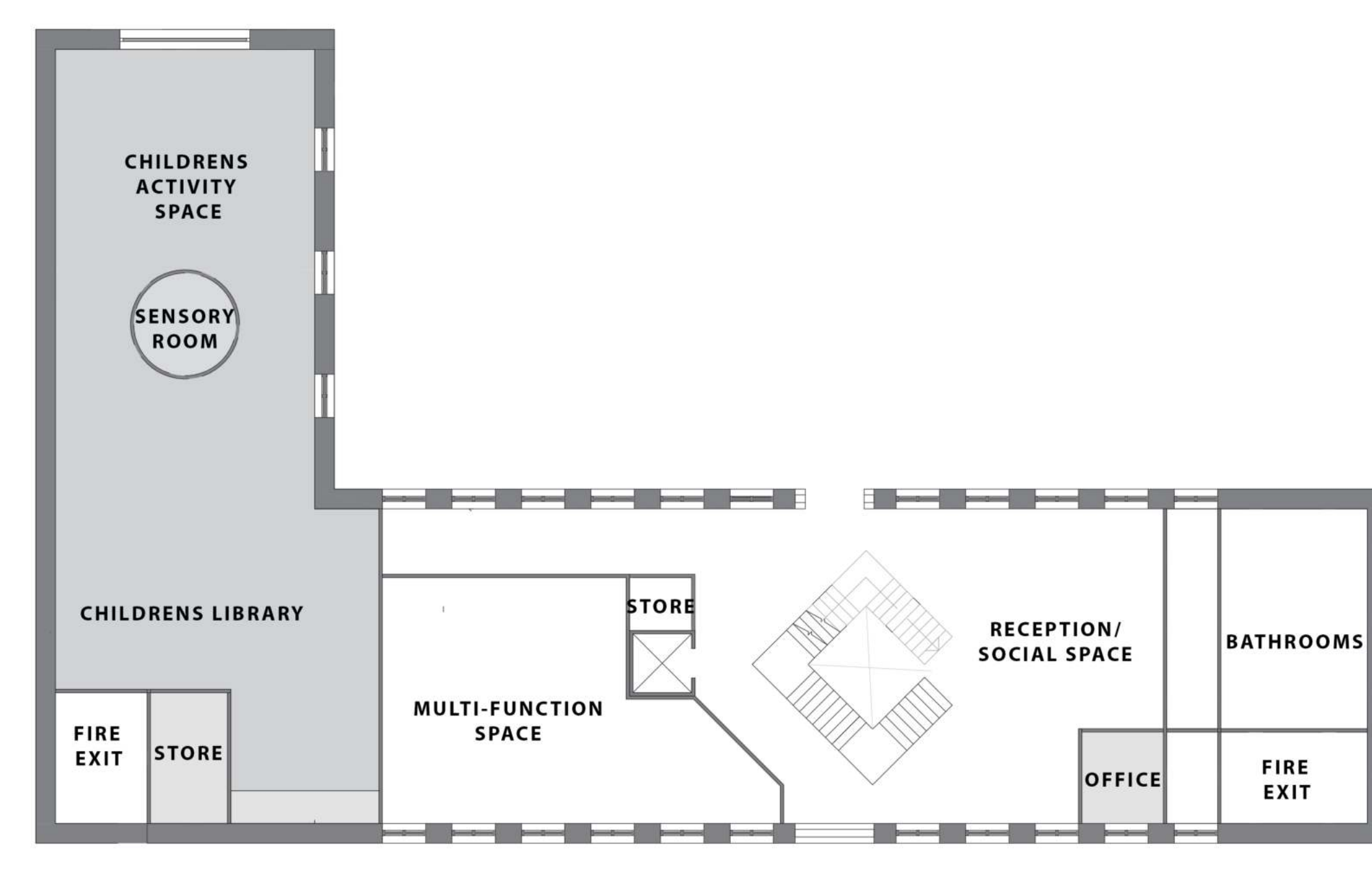
THIRD FLOOR PLAN SCALE 1:150



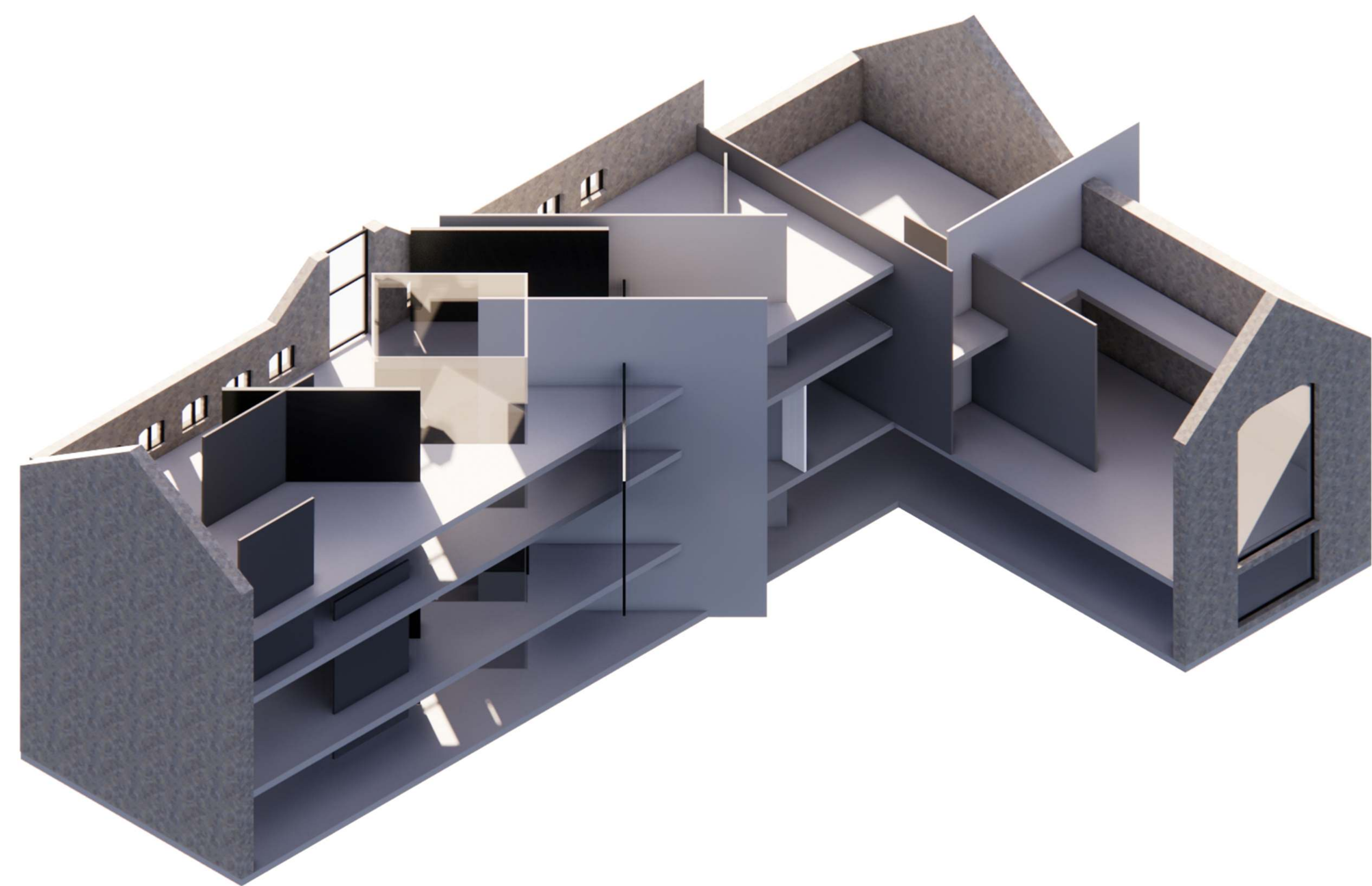
SECOND FLOOR PLAN SCALE 1:150



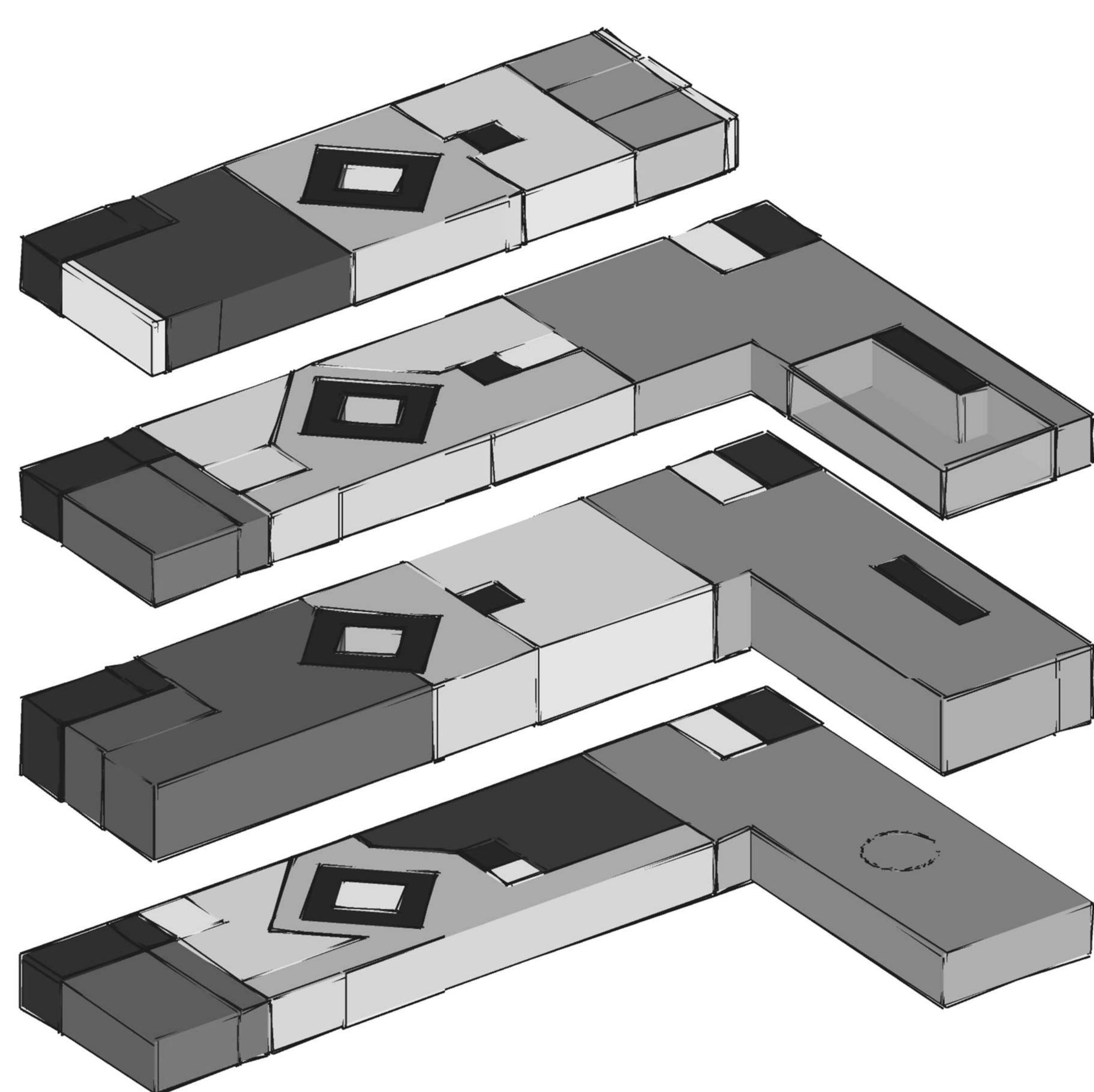
FIRST FLOOR PLAN SCALE 1:150



GROUND FLOOR PLAN SCALE 1:150



ISOMETRIC OF CONCEPTUAL APPROACH



VISUAL OF MASTER PLAN

